



DESIGNER DOOR FRAMES



The Ultimate in Design, Engineering & Quality

Open Up to Kingsman's Decorative Door Frames

MODELS	ARCH DOOR OVERLAYS				DESIGNER DOORS (OPERATIVE)		
	Deluxe Black (ADDX)	Top Half Black (ADTH)	Double Black (ADDA)	Double Door Black (ADDD)	Straight Designer Door with Screen (DDS1BL)	Arch Designer Door with Screen (DDA1BL)	Child Safety Screen (CSS)
ZERO CLEARANCE FIREPLACES							
ZDV3318/20	•	•	•	•	•	•	•
ZDV6000	•	•	•	•	•	•	•
ZV3600	•	•	•	•	•	•	•
ZDV3622	•	•	•	•	•	•	•
HBZDV3624/28/32	•	•	•	•	•	•	•
ZV4200	•	•	•	•	•	•	•
HBZDV4224/28/32	•	•	•	•	•	•	•
HBZDV4740	•	•	•	•	•	•	•
ZDV5245	•	•	•	•			
MULTI VIEW							
*MDV31	•	•	•	•	•	•	•
*MDV39	•	•	•	•	•	•	•
INSERTS							
VFI25	•	•	•	•			
VFI30	•	•	•	•			
IDV33/IDV36	•	•	•	•	•	•	•
VENT FREE							
ZVF33P/36U/42U					•	•	

*Large Panel Only



Double Black – ADDA



Deluxe Black – ADDX



Straight Designer Door with Screen – DDS1



Top Half Black – ADTH

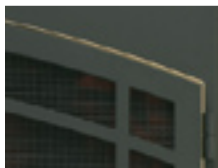


Double Door Arch Black – ADDD



Arch Designer Door with Screen – DDA1

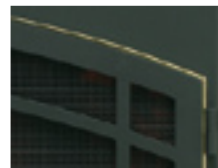
KINGSMAN'S DESIGNER DOOR ACCESSORIES



Antique Trim



Chrome Trim



Polish Brass Trim

NOTE:
Antique, Polish Brass and Chrome Door Trims are available for Arch and Straight Designer Doors.



Child Safety Screen – CSS



2340 Logan Avenue
Winnipeg, Manitoba, Canada R2R 2V3
Phone: (204) 632-1962 Fax: (204) 632-1960
www.kingsmanfireplaces.com